

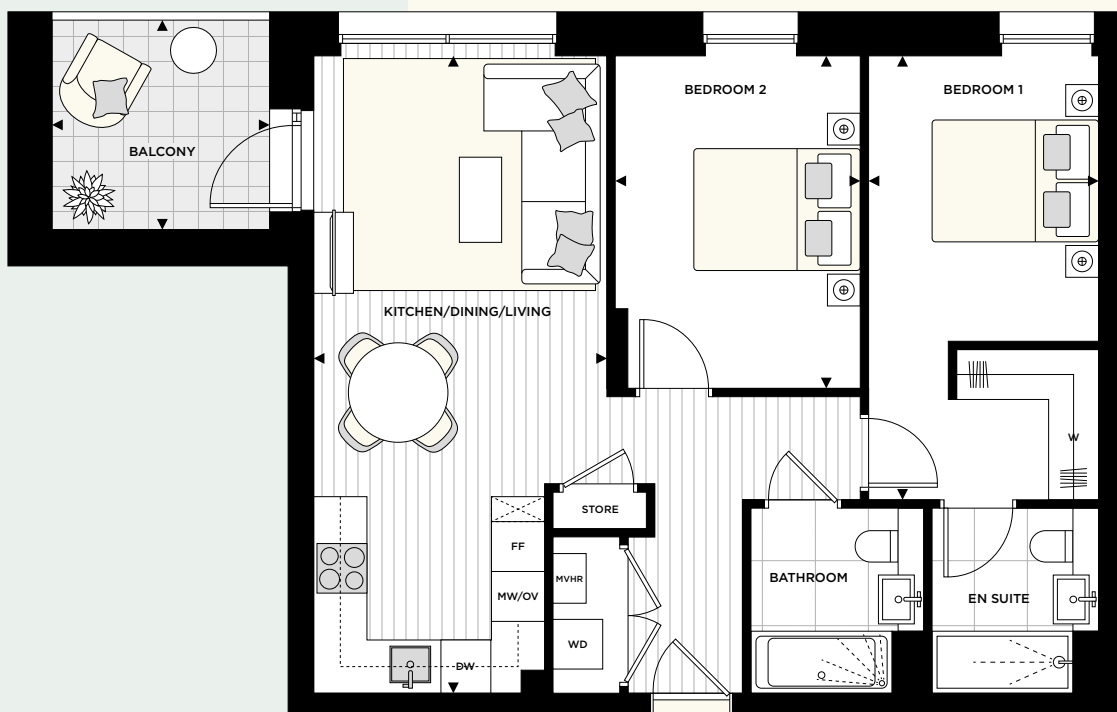
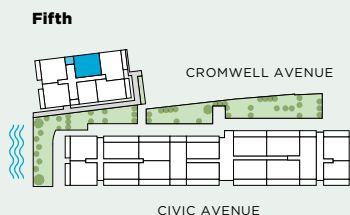
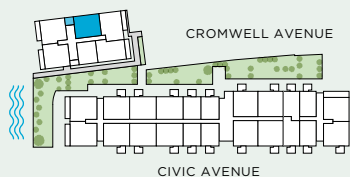
# 2 BED APARTMENT



ROOM	DIMENSIONS — METRES	DIMENSIONS — FEET	KEY
Kitchen/Dining/Living	7.65m x 3.50m	25' 1" x 11' 5"	DW Dishwasher
Bedroom 1	5.32m x 2.77m	17' 6" x 9' 1"	FF Fridge freezer
Bedroom 2	3.99m x 2.96m	13' 1" x 9' 8"	WD Washer dryer
<b>Apartment area</b>	<b>72.03 sq m</b>	<b>775.32 sq ft</b>	MW Microwave
Balcony	2.60m x 2.51m	8' 6" x 8' 3"	OV Oven
<b>Balcony area</b>	<b>6.50 sq m</b>	<b>69.96 sq ft</b>	W Wardrobe
			--- Overhead cupboards
			☒ Integrated bookcase

## FLOOR

**Fourth**  **Fourth** **Fifth**  
D4.27 D5.33



The kitchen, furniture layouts and dimensions on the floorplans are for guidance only. Dimensions are taken from the points indicated and are not intended to be used for carpet sizes, appliance space or items of furniture. The sq m and sq ft are measured as gross internal areas using the RICS property measurement (1st edition). Apartment layouts shown here are for approximate measurements only. All measurements and areas may vary within a tolerance of 5%. Wardrobe layouts and locations are indicative only. Balconies may vary in size. Window arrangements may vary from floor to floor. Room heights are 2400mm for hallways, bathrooms and cupboards and 2600mm for all bedrooms and kitchen/dining/living spaces and may vary due to bulkheads. Pipework boxing locations within store cupboards may also vary. Please speak to your sales executive for details.